

# GYÜRŰMAGOK

# RINGKERNE

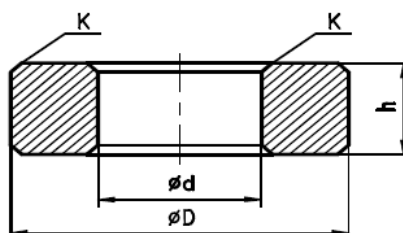
# TOROIDS

Rendelési szám

Bestellnummer

Ordering code

1041 -XXXX -XX -X



| TIPUS<br>TYP<br>TYPE | MÉRETEK<br>ABMESSUNGEN<br>DIMENSIONS |           |           |         | EFFEKTÍV PARAMÉTEREK<br>MAGNETISCHE<br>FORMKENNGRÖSSEN<br>EFFECTIVE CORE PARAMETERS |                |                    |                    | Súly<br>Gewicht<br>Weight |
|----------------------|--------------------------------------|-----------|-----------|---------|---|----------------|--------------------|--------------------|---------------------------|
|                      | ØD                                   | Ød        | h         | K       | C <sub>l</sub>  | l <sub>e</sub> | A <sub>e</sub>     | V <sub>e</sub>     |                           |
| -XXXX                | [mm]                                 |           |           |         | [mm <sup>-1</sup> ]   | [mm]           | [mm <sup>2</sup> ] | [mm <sup>3</sup> ] | ≈ g/satz                  |
| -1030                | 7,0 ±0,3                             | 4,0 ±0,3  | 2,0 ±0,15 | -       | 5,7567  | 17,27          | 3,00               | 52,0               | 0,26                      |
| -1040                | 7,0 ±0,3                             | 4,0 ±0,3  | 2,5 ±0,2  | -       | 4,6053  | 17,27          | 3,75               | 64,8               | 0,30                      |
| -1080                | 8,0 ±0,3                             | 4,0 ±0,3  | 4,0 ±0,2  | 0,4x45° | 2,3550  | 18,84          | 8,00               | 151,0              | 0,70                      |
| -1350                | 10,0 ±0,5                            | 6,0 ±0,3  | 3,0 ±0,2  | 0,5x45° | 4,5673  | 25,12          | 5,50               | 138,0              | 0,85                      |
| -1410                | 10,0 ±0,5                            | 6,0 ±0,3  | 4,0 ±0,2  | 0,5x45° | 3,3493  | 25,12          | 7,50               | 188,0              | 0,90                      |
| -1060                | 10,0 ±0,5                            | 6,0 ±0,3  | 4,5 ±0,3  | 0,5x45° | 2,9553  | 25,12          | 8,50               | 214,0              | 0,95                      |
| -1110                | 10,0 ±0,5                            | 6,0 ±0,3  | 5,0 ±0,3  | 0,5x45° | 2,6442  | 25,12          | 9,50               | 239,0              | 1,00                      |
| -1430                | 12,0 ±0,3                            | 6,0 ±0,3  | 4,0 ±0,2  | 0,5x45° | 2,3550  | 28,26          | 12,00              | 339,0              | 1,70                      |
| -1310                | 12,0 ±0,3                            | 6,0 ±0,3  | 4,5 ±0,3  | 0,5x45° | 2,0933  | 28,26          | 13,50              | 382,0              | 1,90                      |
| -1670                | 12,5 ±0,3                            | 7,5 ±0,2  | 4,0 ±0,2  | 0,5x45° | 3,3053  | 31,40          | 9,50               | 298,0              | 1,20                      |
| -1150                | 12,5 ±0,3                            | 7,5 ±0,2  | 5,0 ±0,3  | 0,5x45° | 2,6838  | 31,40          | 11,70              | 367,0              | 1,50                      |
| -1140                | 12,5 ±0,3                            | 7,5 ±0,2  | 6,0 ±0,3  | 0,5x45° | 2,1655  | 31,40          | 14,50              | 455,0              | 1,80                      |
| -1120                | 12,5 ±0,3                            | 7,5 ±0,2  | 9,5 ±0,3  | 0,5x45° | 1,3505  | 31,40          | 23,25              | 730,0              | 3,50                      |
| -1780                | 13,0 ±0,35                           | 7,0 ±0,2  | 3,0 ±0,2  | 0,5x45° | 3,6941  | 31,40          | 8,50               | 267,0              | 1,20                      |
| -1770                | 13,0 ±0,35                           | 7,0 ±0,2  | 12,0 ±0,4 | 0,5x45° | 0,8845  | 31,40          | 35,50              | 1115,0             | 5,00                      |
| -1100                | 14,0 ±0,4                            | 9,0 ±0,3  | 5,0 ±0,3  | 0,5x45° | 3,0092  | 36,11          | 12,00              | 433,0              | 2,50                      |
| -1640                | 14,0 ±0,4                            | 9,0 ±0,3  | 6,0 ±0,3  | 0,5x45° | 2,4903  | 36,11          | 14,50              | 524,0              | 2,60                      |
| -1090                | 14,0 ±0,4                            | 9,0 ±0,3  | 9,0 ±0,3  | 0,5x45° | 1,6414  | 36,11          | 22,00              | 794,0              | 4,20                      |
| -1130                | 16,0 ±0,4                            | 9,6 ±0,3  | 6,3 ±0,3  | 0,5x45° | 2,0505  | 40,19          | 19,60              | 788,0              | 3,70                      |
| -1370                | 19,0 ±0,4                            | 11,0 ±0,3 | 8,0 ±0,3  | 0,8x45° | 1,5832  | 47,02          | 29,70              | 1396,0             | 6,50                      |
| -1380                | 19,0 ±0,4                            | 11,0 ±0,3 | 10,0 ±0,3 | 0,8x45° | 1,2572  | 47,02          | 37,40              | 1759,0             | 8,50                      |
| -1600                | 20,0 ±0,4                            | 10,5 ±0,3 | 7,0 ±0,3  | 0,8x45° | 1,4976  | 47,88          | 31,97              | 1530,0             | 5,80                      |
| -1440                | 20,0 ±0,4                            | 10,5 ±0,3 | 8,0 ±0,3  | 0,8x45° | 1,4378  | 47,88          | 33,30              | 1594,0             | 6,50                      |
| -1160                | 20,0 ±0,4                            | 10,5 ±0,3 | 10,0 ±0,3 | 0,8x45° | 1,1346  | 47,88          | 42,20              | 2021,0             | 8,20                      |
| -1610                | 22,0 ±0,5                            | 13,7 ±0,4 | 6,3 ±0,3  | 1x45°   | 2,3270  | 56,08          | 24,10              | 1352,0             | 6,40                      |
| -1850                | 22,0 ±0,5                            | 13,7 ±0,4 | 7,0 ±0,2  | 1x45°   | 2,0732  | 56,08          | 27,05              | 1520,0             | 6,80                      |
| -1390                | 22,0 ±0,5                            | 13,7 ±0,4 | 11,1 ±0,4 | 1x45°   | 1,2728  | 56,08          | 44,06              | 2471,0             | 11,80                     |
| -1740                | 22,0 ±0,5                            | 13,7 ±0,4 | 13,0 ±0,4 | 1x45°   | 1,0795  | 56,08          | 51,95              | 2913,0             | 13,20                     |
| -1760                | 22,0 ±0,5                            | 13,7 ±0,4 | 14,0 ±0,4 | 1,0x45° | 0,9996  | 56,08          | 56,10              | 3146,0             | 14,20                     |
| -1420                | 24,0 ±0,5                            | 12,0 ±0,5 | 6,0 ±0,3  | 1,0x45° | 1,5700  | 56,52          | 36,00              | 2035,0             | 9,00                      |
| -1400                | 24,0 ±0,5                            | 12,0 ±0,5 | 12,0 ±0,4 | 1,0x45° | 0,7850  | 56,52          | 72,00              | 4069,0             | 18,00                     |
| -1880                | 24,0 ±0,5                            | 12,0 ±0,5 | 14,0 ±0,4 | 1,0x45° | 0,6892  | 56,52          | 82,00              | 4635,0             | 21,00                     |
| -1500                | 26,0 ±0,4                            | 14,5 ±0,3 | 7,5 ±0,3  | 1,3x45° | 1,6344  | 63,58          | 38,90              | 2473,0             | 12,00                     |
| -1540                | 26,0 ±0,4                            | 14,5 ±0,3 | 9,0 ±0,3  | 1,3x45° | 1,3357  | 63,58          | 47,60              | 3026,0             | 14,50                     |
| -1530                | 26,0 ±0,4                            | 14,5 ±0,3 | 9,5 ±0,3  | 1,3x45° | 1,2590  | 63,58          | 50,50              | 3211,0             | 16,00                     |

A táblázatokban megadott méretek bevonat nélkül értendők.

The values given on the charts are without coating.

In den Tabellen angegebene Abmessungen werden ohne Überzug verstanden.

## GYÜRŰMAGOK

## RINGKERNE

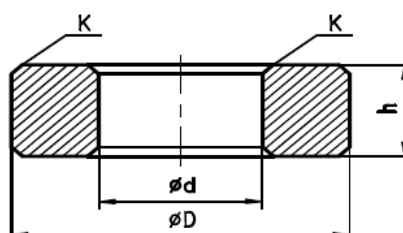
## TOROIDS

Rendelési szám

Bestellnummer

Ordering code

1041 -XXXX -XX -X



| TIPUS<br>TYP<br>TYPE | MÉRETEK<br>ABMESSUNGEN<br>DIMENSIONS |                 |           |         | EFFEKTÍV PARAMÉTEREK<br>MAGNETISCHE<br>FORMKENNGRÖSSEN<br>EFFECTIVE CORE PARAMETERS |        |                   |                   | Súly<br>Gewicht<br>Weight |
|----------------------|--------------------------------------|-----------------|-----------|---------|---|--------|-------------------|-------------------|---------------------------|
|                      | $\varnothing D$                      | $\varnothing d$ | h         | K       | $C_1$   | $l_e$  | $A_e$             | $V_e$             |                           |
| -XXXX                | [mm]                                 |                 |           |         | [ $\text{mm}^{-1}$ ]  | [mm]   | [ $\text{mm}^2$ ] | [ $\text{mm}^3$ ] | $\approx$ g/satz          |
| -1460                | 26,0 ±0,4                            | 14,5 ±0,3       | 10,0 ±0,3 | 1,3x45° | 1,1906  | 63,58  | 53,40             | 3395,0            | 16,50                     |
| -1690                | 26,0 ±0,55                           | 14,5 ±0,3       | 12,0 ±0,4 | 1,3x45° | 0,9689  | 63,58  | 65,62             | 4172,0            | 21,00                     |
| -1330                | 26,0 ±0,4                            | 14,5 ±0,3       | 15,0 ±0,4 | 1,3x45° | 0,7669  | 63,58  | 82,90             | 5271,0            | 25,00                     |
| -1480                | 26,0 ±0,55                           | 14,5±0,35       | 20,0 ±0,5 | 1,3x45° | 0,5697  | 63,58  | 111,60            | 7096,0            | 35,00                     |
| -1680                | 26,0 ±0,55                           | 14,5 ±0,3       | 25,0 ±0,5 | 1,3x45° | 0,4529  | 63,58  | 140,37            | 8924,7            | 43,00                     |
| -1700                | 27,0 ±0,4                            | 14,5 ±0,3       | 15,0 ±0,4 | 1,3x45° | 0,7383  | 66,72  | 90,37             | 6029,0            | 29,00                     |
| -1220                | 28,0 ±0,5                            | 16,3 ±0,4       | 10,0 ±0,3 | 1,3x45° | 1,2622  | 69,55  | 55,10             | 3832,0            | 19,00                     |
| -1840                | 28,0 ±0,5                            | 16,3 ±0,4       | 15,0 ±0,4 | 1,3x45° | 0,8240  | 69,55  | 84,40             | 5870,0            | 28,00                     |
| -1170                | 28,0 ±0,5                            | 16,3 ±0,4       | 20,0 ±0,5 | 1,3x45° | 0,6122  | 69,55  | 113,60            | 7900,8            | 38,00                     |
| -1190                | 28,0 ±0,5                            | 16,3 ±0,4       | 24,5 ±0,5 | 1,3x45° | 0,4982  | 69,55  | 139,60            | 9709,0            | 45,00                     |
| -1450                | 29,0 ±0,4                            | 12,0 ±0,3       | 6,0±0,3   | 1,0x45° | 1,3161  | 64,49  | 49,00             | 3160,0            | 15,50                     |
| -1260                | 29,0 ±0,5                            | 18,5 ±0,4       | 7,5 ±0,3  | 1,3x45° | 2,0714  | 74,57  | 36,00             | 2685,0            | 13,00                     |
| -1320                | 30,0 ±0,7                            | 11,0 ±0,4       | 6,0 ±0,3  | 1,0x45° | 1,1704  | 64,37  | 55,00             | 3540,0            | 17,00                     |
| -1660                | 30,0 ±0,7                            | 11,0 ±0,4       | 7,0 ±0,3  | 1,0x45° | 0,9980  | 64,37  | 64,50             | 4152,0            | 20,00                     |
| -1300                | 30,0 ±0,7                            | 11,0 ±0,4       | 8,0 ±0,3  | 1,0x45° | 0,8782  | 64,37  | 73,30             | 4718,0            | 22,50                     |
| -1630                | 30,0 ±0,7                            | 12,4 ±0,4       | 8,0 ±0,3  | 1,0x45° | 0,9610  | 66,60  | 69,37             | 4615,0            | 22,00                     |
| -1710                | 30,2 ±0,5                            | 12,3 ±0,4       | 7,2 ±0,3  | 1,0x45° | 1,0680  | 66,69  | 62,44             | 4164,0            | 21,00                     |
| -1720                | 30,8 ±0,5                            | 19,9 ±0,4       | 11,8 ±0,4 | 1,0x45° | 1,2777  | 79,60  | 62,30             | 4959,0            | 28,50                     |
| -1860                | 30,8 ±0,5                            | 19,9 ±0,4       | 12,5 ±0,4 | 1,0x45° | 1,2039  | 79,60  | 66,12             | 5263,0            | 30,00                     |
| -1830                | 31,4 ±0,7                            | 19,0 ±0,5       | 12,3 ±0,4 | 1,0x45° | 1,0650  | 79,13  | 74,30             | 5879,0            | 29,00                     |
| -1650                | 32,0 ±0,7                            | 15,0 ±0,5       | 10,0 ±0,3 | 1,0x45° | 0,8890  | 73,79  | 83,00             | 6125,0            | 29,50                     |
| -1340                | 32,0 ±0,7                            | 15,0 ±0,5       | 13,0 ±0,4 | 1,0x45° | 0,6801  | 73,79  | 108,50            | 8006,0            | 31,00                     |
| -1730                | 32,0 ±0,7                            | 15,0 ±0,5       | 15,0 ±0,4 | 1,0x45° | 0,5895  | 73,79  | 125,50            | 9286,0            | 43,00                     |
| -1580                | 32,0 ±0,7                            | 15,0 ±0,5       | 17,0 ±0,5 | 1,0x45° | 0,5178  | 73,79  | 142,50            | 10515,0           | 40,50                     |
| -1790                | 34,0 ±0,7                            | 20,5 ±0,5       | 12,5 ±0,4 | 1,0x45° | 0,9936  | 82,11  | 82,64             | 6786,0            | 33,00                     |
| -1240                | 36,0 ±0,7                            | 23,0 ±0,5       | 10,0 ±0,3 | 1,3x45° | 1,5516  | 92,63  | 59,70             | 5530,0            | 28,70                     |
| -1210                | 36,0 ±0,7                            | 23,0 ±0,5       | 15,0 ±0,4 | 1,3x45° | 1,0047  | 92,63  | 92,20             | 8540,0            | 43,00                     |
| -1250                | 36,0 ±0,7                            | 23,0 ±0,5       | 18,7 ±0,5 | 1,3x45° | 0,7985  | 92,63  | 116,00            | 10745,0           | 51,00                     |
| -1550                | 41,8 ±1,0                            | 26,2 ±0,6       | 12,5 ±0,4 | 1,0x45° | 1,0800  | 103,07 | 95,80             | 9860,0            | 45,00                     |
| -1200                | 42,0 ±0,7                            | 21,0 ±0,3       | 8,0 ±0,3  | 1,5x45° | 1,2442  | 98,91  | 79,50             | 7863,0            | 38,90                     |
| -1280                | 42,0 ±0,7                            | 21,0 ±0,3       | 18,5 ±0,5 | 1,5x45° | 0,5214  | 98,91  | 189,70            | 18763,0           | 92,40                     |
| -1180                | 42,0 ±0,7                            | 21,0 ±0,3       | 22,0 ±0,5 | 1,5x45° | 0,4367  | 98,91  | 226,50            | 22403,0           | 107,00                    |
| -1270                | 45,0 ±0,7                            | 22,0 ±0,3       | 10,5 ±0,4 | 1,5x45° | 1,0095  | 105,19 | 104,20            | 10961,0           | 57,00                     |
| -1870                | 50,0 ±1,0                            | 34,0 ±0,8       | 16,0 ±0,5 | 1,3x45° | 1,0589  | 131,94 | 124,60            | 16440,0           | 76,50                     |
| -1620                | 50,0 ±1,0                            | 34,0 ±0,8       | 19,0 ±0,5 | 1,3x45° | 0,8879  | 131,94 | 148,60            | 19606,0           | 92,00                     |

A táblázatokban megadott méretek bevonat nélkül értendők.

The values given on the charts are without coating.

In den Tabellen angegebene Abmessungen werden ohne Überzug verstanden.

## GYŰRŰMAGOK

## RINGKERNE

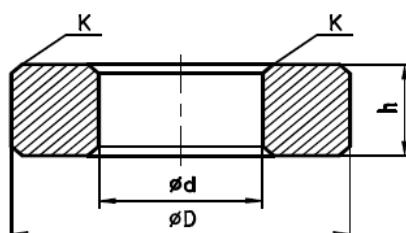
## TOROIDS

Rendelési szám

Bestellnummer

Ordering code

1041 -XXXX -XX -X



| TIPUS<br>TYP<br>TYPE | MÉRETEK<br>ABMESSUNGEN<br>DIMENSIONS |                 |                 |         | EFFEKTÍV PARAMÉTEREK<br>MAGNETISCHE<br>FORMKENNGRÖSSEN<br>EFFECTIVE CORE PARAMETERS |        |                   |                   | Súly<br>Gewicht<br>Weight |
|----------------------|--------------------------------------|-----------------|-----------------|---------|---|--------|-------------------|-------------------|---------------------------|
|                      | $\varnothing D$                      | $\varnothing d$ | h               | K       | $C_1$   | $l_e$  | $A_e$             | $V_e$             |                           |
| -XXXX                | [mm]                                 |                 |                 |         | [ $\text{mm}^{-1}$ ]  | [mm]   | [ $\text{mm}^2$ ] | [ $\text{mm}^3$ ] | $\approx$ g/satz          |
| -1750                | 50,0 $\pm$ 1,0                       | 34,0 $\pm$ 0,8  | 20,0 $\pm$ 0,5  | 1,3x45° | 0,8425  | 131,94 | 156,60            | 20662,0           | 95,50                     |
| -1290                | 50,0 $\pm$ 1,0                       | 34,0 $\pm$ 0,8  | 30,0 $\pm$ 0,6  | 1,3x45° | 0,5577  | 131,94 | 236,60            | 31217,0           | 143,00                    |
| -1470                | 56,0 $\pm$ 1,6                       | 32,0 $\pm$ 1,0  | 10,0 $\pm$ 0,4  | 1,5x45° | 1,1962  | 138,16 | 115,50            | 15957,0           | 75,00                     |
| -1520                | 56,0 $\pm$ 1,6                       | 32,0 $\pm$ 1,0  | 18,0 $\pm$ 0,5  | 1,5x45° | 0,6532  | 138,16 | 211,50            | 29221,0           | 135,00                    |
| -1560                | 58,3 $\pm$ 1,0                       | 40,8 $\pm$ 0,8  | 17,6 $\pm$ 0,5  | 1,0x45° | 1,0000  | 152,40 | 152,40            | 23220,0           | 110,00                    |
| -1800                | 58,3 $\pm$ 1,0                       | 40,8 $\pm$ 0,8  | 20,3 $\pm$ 0,5  | 1,0x45° | 0,8679  | 152,40 | 175,60            | 26761,0           | 133,00                    |
| -1490                | 60,0 $\pm$ 1,5                       | 21,0 $\pm$ 0,5  | 10,0 $\pm$ 0,4  | 1,5x45° | 0,6522  | 127,17 | 195,00            | 24798,0           | 118,00                    |
| -1360                | 60,0 $\pm$ 1,5                       | 30,0 $\pm$ 1,0  | 20,0 $\pm$ 0,5  | 1,5x45° | 0,4784  | 141,37 | 295,50            | 41775,0           | 185,00                    |
| -2070                | 63,0 $\pm$ 1,5                       | 38,0 $\pm$ 1,2  | 12,5 $\pm$ 0,4  | 1,5x45° | 1,0447  | 158,60 | 151,80            | 24075,0           | 119,00                    |
| -1810                | 63,0 $\pm$ 1,5                       | 38,0 $\pm$ 1,2  | 25,0 $\pm$ 0,8  | 1,5x45° | 0,5004  | 158,60 | 316,90            | 50260,0           | 238,00                    |
| -2110                | 80,0 $\pm$ 2,0                       | 50,0 $\pm$ 1,2  | 20,0 $\pm$ 0,6  | 1,5x45° | 0,7183  | 204,00 | 284,00            | 57936,0           | 290,00                    |
| -1820                | 85,0 $\pm$ 1,5                       | 62,0 $\pm$ 1,5  | 15,0 $\pm$ 0,6  | 1,5x45° | 1,3738  | 230,79 | 168,00            | 38773,0           | 180,00                    |
| -1900                | 87,4 $\pm$ 1,35                      | 54,0 $\pm$ 1,0  | 13,8 $\pm$ 0,45 | 1,5x45° | 0,9827  | 222,00 | 225,90            | 50149,8           | 246,00                    |
| -2090                | 100,0 $\pm$ 2,0                      | 55,0 $\pm$ 1,5  | 20,0 $\pm$ 0,8  | 1,5x45° | 0,5586  | 243,00 | 435,00            | 105705,0          | 530,00                    |
| -1570                | 102,0 $\pm$ 2,0                      | 65,8 $\pm$ 1,3  | 15,0 $\pm$ 0,5  | 1,5x45° | 0,9600  | 255,00 | 267,00            | 68200,0           | 345,00                    |
| -2080                | 152,0 $\pm$ 4,0                      | 68,5 $\pm$ 2,0  | 18,0 $\pm$ 1,0  | 1,5x45° | 0,4632  | 346,00 | 747,00            | 258462,0          | 1160,00                   |

A táblázatokban megadott méretek bevonat nélkül értendők.

The values given on the charts are without coating.

In den Tabellen angegebene Abmessungen werden ohne Überzug verstanden.

## GYÜRŰMAGOK

## RINGKERNE

## TOROIDS

Rendelési szám

Bestellnummer

Ordering code

1041 -XXXX -XX -X

Légrésnélküli fazékmagok  $A_L$ -értékei  
 $A_L$ -Werte der Schalenkerne ohne Luftspalt  
 $A_L$ -values of pot cores without air gap

| Tipus<br>Typ<br>Type | Anyag<br>Werkstoff<br>Material | $A_L^{+30}_{-20} \% [nH]$ |      |      |       |        |        |        |
|----------------------|--------------------------------|---------------------------|------|------|-------|--------|--------|--------|
|                      |                                | M2F                       | M4   | M5   | M6    | M2TN-B | M2TN-C | M2TN-D |
| -XXXX                | -XX                            | -22                       | -40  | -50  | -60   | -25    | -26    | -27    |
| -1030                |                                | 480                       |      |      |       | 440    | 500    | 440    |
| -1040                |                                | 600                       | 1090 |      |       | 545    | 630    | 545    |
| -1080                |                                | 1170                      | 2130 | 2670 |       | 1070   | 1230   | 1070   |
| -1350                |                                | 605                       | 1100 | 1370 |       | 550    | 630    | 550    |
| -1410                |                                | 825                       | 1500 | 1870 | 2250  | 750    | 860    | 750    |
| -1060                |                                | 936                       | 1700 | 2120 | 2550  | 850    | 980    | 850    |
| -1110                |                                | 1050                      | 1900 | 2370 | 2850  | 950    | 1090   | 950    |
| -1430                |                                | 1170                      | 2130 | 2660 | 3200  | 1070   | 1230   | 1070   |
| -1310                |                                | 1320                      | 2400 | 3000 | 3600  | 1200   | 1380   | 1200   |
| -1670                |                                | 840                       | 1520 | 1900 | 2280  | 760    | 870    | 760    |
| -1150                |                                | 1030                      | 1870 | 2340 | 2810  | 940    | 1080   | 940    |
| -1140                |                                | 1280                      | 2320 | 2900 | 3480  | 1160   | 1340   | 1160   |
| -1120                |                                | 2050                      | 3720 | 4650 | 5580  | 1860   | 2140   | 1860   |
| -1780                |                                | 750                       | 1360 | 1700 | 2040  | 680    | 780    | 680    |
| -1770                |                                | 3130                      | 5680 | 7100 | 8520  | 2840   | 3270   | 2840   |
| -1100                |                                | 920                       | 1670 | 2090 | 2500  | 830    | 960    | 830    |
| -1640                |                                | 1110                      | 2000 | 2500 | 3030  | 1000   | 1160   | 1000   |
| -1090                |                                | 1680                      | 3060 | 3830 | 4590  | 1530   | 1760   | 1530   |
| -1130                |                                | 1420                      | 2575 | 3220 | 3860  | 1290   | 1480   | 1290   |
| -1370                |                                | 1750                      | 3180 | 3970 | 4760  | 1590   | 1830   | 1590   |
| -1380                |                                | 2200                      | 4000 | 5000 | 6000  | 2000   | 2300   | 2000   |
| -1600                |                                | 1850                      | 3360 | 4200 | 5030  | 1680   | 1930   | 1680   |
| -1440                |                                | 1920                      | 3500 | 4370 | 5240  | 1750   | 2010   | 1750   |
| -1160                |                                | 2440                      | 4430 | 5540 | 6650  | 2220   | 2550   | 2220   |
| -1610                |                                | 1190                      | 2160 | 2700 | 3240  | 1080   | 1240   | 1080   |
| -1850                |                                | 1330                      | 2430 | 3030 | 3640  | 1210   | 1390   | 1210   |
| -1390                |                                | 2170                      | 3950 | 4940 | 5920  | 1975   | 2270   | 1975   |
| -1740                |                                | 2560                      | 4660 | 5820 | 6990  | 2330   | 2680   | 2330   |
| -1760                |                                | 2770                      | 5030 | 6290 | 7540  | 2520   | 2890   | 2520   |
| -1420                |                                | 1760                      | 3200 | 4000 | 4800  | 1600   | 1840   | 1600   |
| -1400                |                                | 3520                      | 6410 | 8010 | 9600  | 3200   | 3680   | 3200   |
| -1880                |                                | 4000                      | 7300 | 9120 | 10940 | 3650   | 4190   | 3650   |
| -1500                |                                | 1690                      | 3080 | 3840 | 4610  | 1540   | 1770   | 1540   |
| -1540                |                                | 2070                      | 3760 | 4700 | 5640  | 1880   | 2160   | 1880   |
| -1530                |                                | 2200                      | 3990 | 4990 | 5990  | 2000   | 2300   | 2000   |

## GYÜRŰMAGOK

## RINGKERNE

## TOROIDS

Rendelési szám

Bestellnummer

Ordering code

1041 -XXXX -XX -X

Légrésnélküli fazékmagok  $A_L$ -értékei  
 $A_L$ -Werte der Schalenkerne ohne Luftspalt  
 $A_L$ -values of pot cores without air gap

| Tipus<br>Typ<br>Type | Anyag<br>Werkstoff<br>Material | $A_L^{+30}_{-20} \% [nH]$ |       |       |       |        |        |        |
|----------------------|--------------------------------|---------------------------|-------|-------|-------|--------|--------|--------|
|                      |                                | M2F                       | M4    | M5    | M6    | M2TN-B | M2TN-C | M2TN-D |
| -XXXX                | -XX                            | -22                       | -40   | -50   | -60   | -25    | -26    | -27    |
| -1460                |                                | 2320                      | 4220  | 5280  | 6330  | 2110   | 2430   | 2110   |
| -1690                |                                | 2850                      | 5190  | 6490  | 7780  | 2590   | 2980   | 2590   |
| -1330                |                                | 3600                      | 6560  | 8200  | 9830  | 3280   | 3770   | 3280   |
| -1480                |                                | 4850                      | 8820  | 11050 | 13240 | 4410   | 5070   | 4410   |
| -1680                |                                | 6100                      | 11100 | 13870 | 16650 | 5550   | 6380   | 5550   |
| -1700                |                                | 3750                      | 6810  | 8510  | 10200 | 3410   | 3920   | 3410   |
| -1220                |                                | 2190                      | 3980  | 4980  | 5980  | 1990   | 2290   | 1990   |
| -1940                |                                | 2770                      | 5040  | 6300  | 7560  | 2520   | 2900   | 2520   |
| -1840                |                                | 3360                      | 6100  | 7630  | 9150  | 3050   | 3510   | 3050   |
| -1170                |                                | 4520                      | 8210  | 10260 | 12320 | 4110   | 4720   | 4110   |
| -1190                |                                | 5550                      | 10090 | 12600 | 15140 | 5050   | 5800   | 5050   |
| -1450                |                                | 2100                      | 3820  | 4770  | 5730  | 1910   | 2200   | 1910   |
| -1260                |                                | 1440                      | 2620  | 3280  | 3930  | 1310   | 1510   | 1214   |
| -1320                |                                | 2360                      | 4290  | 5370  | 6440  | 2150   | 2410   | 2150   |
| -1660                |                                | 2770                      | 5040  | 6300  | 7560  | 2520   | 2900   | 2520   |
| -1300                |                                | 3150                      | 5720  | 7150  | 8590  | 2860   | 3290   | 2860   |
| -1630                |                                | 2880                      | 5230  | 6540  | 7850  | 2600   | 3000   | 2600   |
| -1710                |                                | 2590                      | 4700  | 5880  | 7060  | 2350   | 2700   | 2350   |
| -1720                |                                | 2160                      | 3930  | 4920  | 5900  | 1970   | 2260   | 1970   |
| -1860                |                                | 2300                      | 4180  | 5220  | 6260  | 2090   | 2400   | 2090   |
| -1830                |                                | 2600                      | 4700  | 5900  | 7000  | 2360   | 2700   | 2360   |
| -1650                |                                | 3100                      | 5650  | 7070  | 8480  | 2830   | 3250   | 2830   |
| -1340                |                                | 4060                      | 7390  | 9240  | 11090 | 3700   | 4250   | 3700   |
| -1730                |                                | 4690                      | 8530  | 10660 | 12790 | 4260   | 4900   | 4260   |
| -1580                |                                | 5340                      | 9710  | 12130 | 14570 | 4850   | 5580   | 4850   |
| -1790                |                                | 2780                      | 5060  | 6350  | 7620  | 2530   | 2910   | 2530   |
| -1240                |                                | 1780                      | 3240  | 4050  | 4860  | 1620   | 1860   | 1620   |
| -1210                |                                | 2750                      | 5000  | 6250  | 7500  | 2500   | 2880   | 2500   |
| -1250                |                                | 3460                      | 6300  | 7870  | 9440  | 3150   | 3620   | 3150   |
| -1550                |                                | 2560                      | 4650  | 5820  |       | 2330   | 2680   |        |
| -1200                |                                | 2220                      | 4040  | 5050  |       | 2020   | 2320   |        |
| -2040                |                                | 4570                      | 8310  | 10390 | 12470 | 4160   | 4780   | 4160   |
| -1280                |                                | 5300                      | 9640  | 12050 |       | 4820   | 5540   |        |
| -1180                |                                | 6330                      | 11500 | 14390 |       | 5750   | 6620   |        |
| -1270                |                                | 2740                      | 4980  | 6220  |       | 2490   | 2860   |        |
| -1870                |                                | 2610                      | 4750  | 5930  |       | 2370   | 2730   |        |
| -1620                |                                | 3100                      | 5660  | 7080  |       | 2830   | 3260   |        |

## GYÜRÜMAGOK

## RINGKERNE

## TOROIDS

Rendelési szám

Bestellnummer

Ordering code

1041 -XXXX -XX -X

Légrésnélküli fazékmagok  $A_L$ -értékei  
 $A_L$ -Werte der Schalenkerne ohne Luftspalt  
 $A_L$ -values of pot cores without air gap

| Tipus<br>Typ<br>Type | Anyag<br>Werkstoff<br>Material | $A_L^{+30}_{-20} \% [nH]$ |       |       |       |        |        |        |
|----------------------|--------------------------------|---------------------------|-------|-------|-------|--------|--------|--------|
|                      |                                | M2F                       | M4    | M5    | M6    | M2TN-B | M2TN-C | M2TN-D |
| -XXXX                | -XX                            | -22                       | -40   | -50   | -60   | -25    | -26    | -27    |
| -1750                |                                | 3280                      | 5970  | 7460  |       | 2980   | 3430   |        |
| -1290                |                                | 4960                      | 9000  | 11270 |       | 4500   | 5180   |        |
| -1470                |                                | 2310                      | 4200  | 5250  |       | 2100   | 2420   |        |
| -1520                |                                | 4230                      | 7700  | 9620  |       | 3850   | 4430   |        |
| -1560                |                                | 2760                      | 5030  | 6280  |       | 2510   | 2890   |        |
| -1800                |                                | 3190                      | 5790  | 7240  |       | 2900   | 3330   |        |
| -1490                |                                | 4240                      | 7710  | 9630  |       | 3850   | 4430   |        |
| -1360                |                                | 5780                      | 10500 | 13130 |       | 5250   | 6040   |        |
| -2070                |                                | 2650                      | 4800  | 6000  | 7200  | 2400   | 2760   |        |
| -1810                |                                | 5530                      | 10050 | 12560 |       | 5025   | 5780   |        |
| -2110                |                                |                           | 7000  | 8750  | 10500 |        |        |        |
| -1820                |                                | 2010                      | 3660  | 4580  |       | 1830   | 2100   |        |
| -1900                |                                | 2810                      | 5120  | 6400  |       | 2560   | 2940   |        |
| -2090                |                                |                           | 9000  | 11250 | 13500 |        |        |        |
| -1570                |                                | 2880                      | 5240  | 6550  |       | 2620   | 3020   |        |
| -2080                |                                |                           | 10800 | 13500 |       |        |        |        |

# GYŰRŰMAGOK

# RINGKERNE

# TOROIDS

Rendelési szám Bestellnummer Ordering code

1041 -XXXX -XX -X

Teljesítményvesztés

Leistungsverlust

Power loss

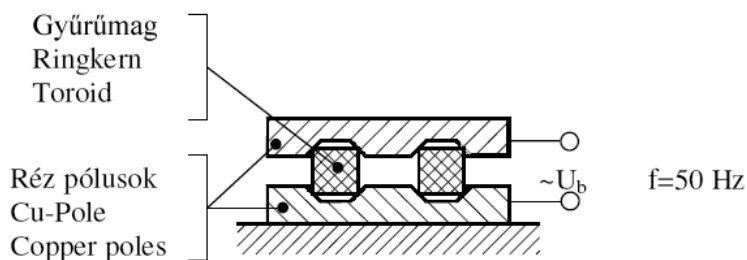
| Anyag<br>Werkstoff<br>Material | $\hat{B}$ [mT] at<br>$\hat{H} = 2,5 \text{ A/cm}$<br>$T = 100 \text{ }^\circ\text{C}$ | "P <sub>v</sub> " [mW/g]         |                                  |                                   |                                   |                                  |
|--------------------------------|---|----------------------------------|----------------------------------|-----------------------------------|-----------------------------------|----------------------------------|
|                                |   | f=16 kHz<br>B=200 mT<br>T=100 °C | f=25 kHz<br>B=200 mT<br>T=100 °C | f=100 kHz<br>B=100 mT<br>T=100 °C | f=100 kHz<br>B=200 mT<br>T=100 °C | f=300 kHz<br>B=50 mT<br>T=100 °C |
| M2TN-B                         | ≥330  | ≤21,0                            | ≤35,0                            | -                                 | -                                 | -                                |
| M2TN-C                         | ≥330  | -                                | ≤20,0                            | ≤25,0                             | -                                 | -                                |
| M2TN-D                         | ≥330  | -                                | -                                | ≤23,0                             | -                                 | ≤30,0                            |

\* \* \*

Gyűrűmágok rendelhetők műanyag bevonattal is.  
Den Ringkern können Sie auch mit Kunststoffüberzug bestellen.  
Toroids may be available with coating.

\* \* \*

Átütési feszültség vizsgálata:  
Prüfung für den Spannungsdurchschlag:  
Test of breakdown voltage:



| -X | Kivitel  | Ausführung    | Construction            |
|----|--|---------------|-------------------------|
| -2 | bevonat nélkül   | unbeschichtet | without coating         |
| -3 | poliamid bevonattal (Ø7-Ø36 mm): szürke, matt. Rétegvastagság: 0,2-0,4 mm.<br>mit Polyamid beschichtung (Ø7-Ø36 mm): grau, matt. Schichtdicke: 0,2-0,4 mm.<br>with polyamide coating (Ø7-Ø36 mm): grey, mat. Thickness: 0,2-0,4 mm.          |               | $U_b \geq 1500\text{V}$ |
| -4 | poliamid bevonattal (Ø7-Ø36 mm): szürke, fényes. Rétegvastagság: 0,2-0,4 mm.<br>mit Polyamid beschichtung (Ø7-Ø36 mm): grau, glänzend. Schichtdicke: 0,2-0,4 mm.<br>with polyamide coating (Ø7-Ø36 mm): grey, bright. Thickness: 0,2-0,4 mm. |               | $U_b \geq 1500\text{V}$ |
| -5 | epoxi bevonattal (Ø41,8-Ø102mm): szürke, fényes. Rétegvastagság: 0,1-0,3mm.<br>mit Epoxi beschichtung (Ø41,8-Ø102mm): grau, glänzend. Schichtdicke: 0,1-0,3mm.<br>with epoxy coating (Ø41,8-Ø102mm): grey, bright. Thickness: 0,1-0,3mm.     |               | $U_b \geq 2000\text{V}$ |
| -6 | műanyag burkolattal (-1460, -1480, -1210, -1540, -1940 típus)<br>mit Kunststoffschale (-1460, -1480, -1210, -1540, 1940 typ)<br>with plastic cap (-1460, -1480, -1210, -1540, 1940 type)   |               | $U_b > 2000\text{V}$    |